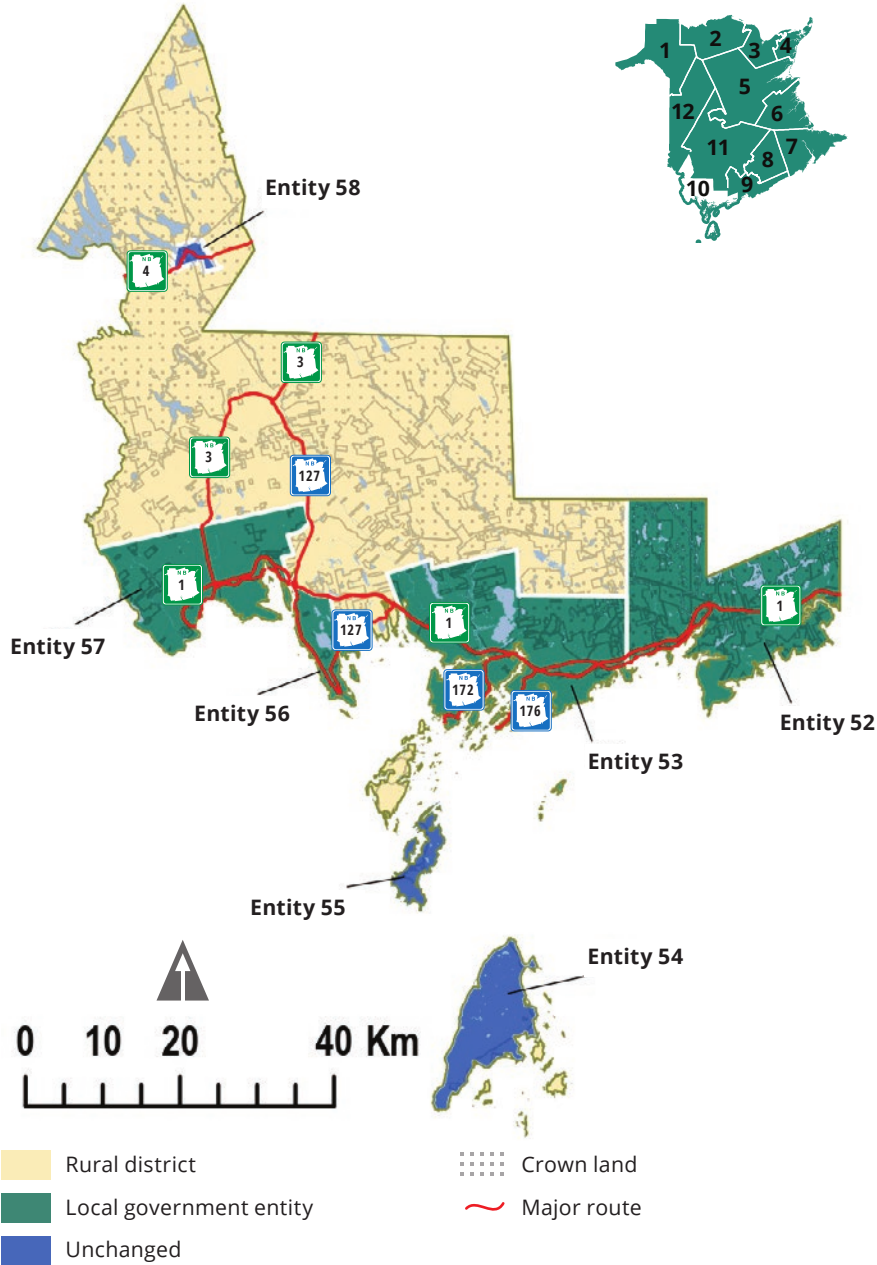


# RSC 10 - SOUTHWEST NEW BRUNSWICK SERVICE COMMISSION



Disclaimer: Map not for legal use and boundaries may be subject to changes. Legal maps with final boundaries will be set in regulation by June 30, 2022.

RSC 10 - Southwest New Brunswick Service Commission			
Entity	Consisting of	Estimated Population	Estimated Tax Base
52	<ul style="list-style-type: none"> <li>- Local service district of Musquash</li> <li>- Local service district of Lepreau</li> </ul>	1,901	\$614,535,850
53	<ul style="list-style-type: none"> <li>- Village of Blacks Harbour</li> <li>- Town of St. George</li> <li>- Portion of the local service district of Pennfield (92%)</li> <li>- Local service district of Beaver Harbour</li> <li>- Local service district of Fundy Bay</li> <li>- Portion of the local service district of St. George (80%)</li> <li>- Portion of the local service district of Saint Patrick (20%)</li> </ul>	6,674	\$554,413,836
54	<ul style="list-style-type: none"> <li>- Village of Grand Manan</li> </ul>	2,360	\$210,116,150
55	<ul style="list-style-type: none"> <li>- Rural Community of Campobello Island</li> </ul>	872	\$98,232,350
56	<ul style="list-style-type: none"> <li>- Town of Saint Andrews</li> <li>- Local service district of Bayside</li> <li>- Local service district of Chamcook</li> </ul>	2,686	\$477,993,150
57	<ul style="list-style-type: none"> <li>- Town of St. Stephen</li> <li>- Portion of the local service district of Western Charlotte (78%)</li> <li>- Local service district of Saint Stephen</li> <li>- Local service district of Dufferin</li> <li>- Portion of the local service district of Saint David (70%)</li> <li>- Local service district of Dennis-Weston</li> </ul>	8,119	\$611,824,069
58	<ul style="list-style-type: none"> <li>- Village of McAdam</li> </ul>	1,151	\$49,779,750
Rural district	<ul style="list-style-type: none"> <li>- Local service district of Dumbarton</li> <li>- Local service district of McAdam</li> <li>- Local service district of West Isles</li> <li>- Local service district of White Head Island</li> <li>- Portion of local service district of Pennfield (8%)</li> <li>- Portion of local service district of Saint George (20%)</li> <li>- Local service district of Saint James</li> <li>- Portion of local service district of Western Charlotte (22%)</li> <li>- Portion of local service district of Saint David (30%)</li> <li>- Local service district of Saint Croix</li> <li>- Portion of the local service district of Saint Patrick (80%)</li> </ul>	4,020	\$360,568,889